

GROUP PRACTICE



TELEMENTAL HEALTH PROGRAM

YOUR TELEMENTAL HEALTH FOUNDATION

MAKE YOUR TELETHERAPY PRACTICE STAND OUT

- INSURANCE CREDENTIALING
- TELETHERAPY COVERAGE
- DEMONSTRATED COMPETENCIES



DIFFERENTIATE YOURSELF



Leverage your knowledge to stand out in a saturated market



Ensure effective, standards based care



Office hours were great. I was really happy with the give and take and the individual attention. You will definitely be seeing me again there.



Abigail McCarrel LCSW, DCSW
Arcadia, CA



5 STEPS TO ASSURED QUALITY CARE



Customize your Teletherapy Program Manual

using PCT's comprehensive templates and get support through Group Practice Office Hours.



Select tech and services

that provide your needed functionality and security with the guidance of our experts in Group Practice Office Hours



Prepare your clinical coordinator

for program leadership with our telemental health training and consultation from PCT's experts.



Prepare your clinicians

with training and materials that empower your team.



Serve clients via telemental health

with the assurance that your program is promoting effective, standards-based skilled teletherapy.



Set Your Practice Apart!

ALL the

- policy templates
- practice forms
- CE courses
- expert advice

you need to promote effective, standards-based, and skilled teletherapy providers in your practice.

BE
CONFIDENT



- credentialing for insurance based practices
- teletherapy coverage
- demonstrated competencies

Materials

Telemental Health Forms

The 5 clinical forms you need to practice telemental health safely and ethically.



- Sample telemental health informed consent form
- Session documentation form,
- Telemental health appropriateness assessment form,
- Technology recovery and client safety plan form,
- Rubric for coaching and testing clinician readiness for videoconferencing-based telemental health.

Program Manual

- Comprehensive Program and Policy Manual for a standards-based teletherapy program
- Guides your clinicians in just what they need to know so they don't get overloaded with extras that won't help them.



Full Training

CE course work for the clinical coordinator and all clinical staff providing teletherapy.

The clinical coordinator(s) will complete the full Telemental Health Certification Program as described here.

This includes coursework on clinical standards, policy decisions, tech selection, and administrative issues.

The full training program consists of 18.5 CE credit hours, comprised by 6 courses:

- **Engaging in HIPAA Security and Digital Confidentiality as a Mental Health Professional.** 9 Ethics CE credit hours.
[See Brochure→](#)
- **Practicing Via Telemental Health I: An Orientation.** 2 CE credit hours; 1 Ethics CE credit hour. [See Brochure→](#)
- **Practicing Via Telemental Health II: Care Delivery Fundamentals.** 2 CE credit hours; 1 Ethics CE credit hour.
[See Brochure→](#)
- **Practicing Via Telemental Health III: The Clinician-Client Relationship.** 2 CE credit hours. [See Brochure→](#)
- **Practicing Via Telemental Health IV: Preparing to Practice.** 2 CE credit hours.
[See Brochure→](#)
- **Cross Jurisdictional Teletherapy Practice: Case Law, Rules Of Practice, And Working With Minors Across State Lines** 2 CE credit hours [See Brochure→](#)

Bonus Trainings

Topical, supportive CE to help you feel even more confident



For each seat of leadership training, you'll also receive access to 5 additional topical bonus trainings:

- **Teletherapy from the Home or Mobile Office: HIPAA, Ethical and Standard of Care Issues.** 1 CE credit hour. [See Brochure→](#)
- **Teletherapy With Older Adults: Clinical Effectiveness, Legal-Ethical Considerations, And Strategies Of Support.** 2 CE credit hours. [See Brochure→](#)
- **Teletherapy and Remote Payment: Legal-Ethical and Practical Considerations.** 1 CE credit hour. [See Brochure→](#)
- **Tele-Assessment: the Research & Practice of Remote Testing.** 1 CE credit hour. [See Brochure→](#)
- **HIPAA Security Topical Trainings,** non CE. [See Brochure→](#)

Team Training

CE course work for the clinical coordinator and all clinical staff providing teletherapy.

STAFF TRAINING:

General clinical staff will complete a truncated portion of the certificate program that focuses on what they need to know for effective clinical work.

The truncated training consists of 5 CE credit hours (3 of which are legal-ethical), comprised by 3 courses:

Practicing Via Telemental Health III: The Clinician-Client Relationship.

[See Brochure→](#)

Video Presentation Skills in Telemental Health, Both Basic and Intermediate.

[See Brochure→](#)

Teletherapy From the Home or Mobile Office: HIPAA, Ethical, and Standard of Care Issues

[See Brochure→](#)

Supportive Resources

Resources that meet you where you are and take you where you need to be-- start to finish.

1 Tech Selection Materials

Get access to PCT's comprehensive tech selection materials to help you figure out what you need in your practice tech stack.

Bring your questions to Group Practice Office Hours to get support around tricky choices.

2 Program Manual & Forms Support

Included in your purchase are customizable templates and forms to help your Telemental Health program director create a procedure manual and clinical forms that meet your practice's needs.

This is the foundation for a legal-ethical and standards based telemental health program.

Group Practice Office Hours is the space to get individualized answers to questions that come from this process.

3 "Lights, Camera, Action" Coaching Sessions

Build confidence in the technical aspects of your team members' clinical craft and rehearse performing a first online session. PCT will train your clinical director to perform the Lights, Camera, Action! with your team members, or they can do their practice session directly with the PCT experts. Confident & competent is the goal!



Direct Support

Group Practice Care Premium

This one service plan provides the tools and direct support that you need for practice optimization on your HIPAA security and teletherapy journey!



Group Practice Care is the support you need- no matter if you just started selecting your services, have scheduled your risk analysis, or started your HIPAA policies and procedures.

- **Service Selection Workbook and Materials** (step one of the PCT Way)
- 1 CE Credit Hour **HIPAA Training for Leadership** (works with step two of the PCT Way) [See brochure→](#)
- Create a team and **assign role-based training** [See brochure→](#)
- Manage your team with **automated kind reminders, deadlines, and instructional support**
- Set it and forget it **management tools**
- **BYOD Leadership Training** - Group Practice Leader Bring Your Own Device (BYOD) [See brochure→](#)

wait...there's more...



- Access to **Device Security Center** ([Step three of the PCT Way](#)) for all team members (no per seat cost)
- **Assignable BYOD training** --> HIPAA Security Awareness: Bring Your Own Device (BYOD) for all team members (no per seat cost) [See brochure](#)→
- **Assign, track, and log device security** for all practice and staff-owned devices
- Ensure all devices that "touch" client info meet requirements for HIPAA and **qualify for HIPAA safe harbor**
- **Documentation management** (including templates and logging of device registrations and attestation) for BYOD for all team members
- **Change management support** for rolling out BYOD program and management of team devices
- Access to **Device Security Center** ([step three of the PCT Way](#)) for all team members (no per seat cost)
- Access to Remote Workspace Leader's Orientation & Document Resource Center

...and more...



- Remote Workspace **policy insert** to add to your policy manual
- Change management support with **template language** for announcing the process to your team, and orientation training for the policy adoption and process
- An assignable **Remote Workspace Security training**
- **A Remote Workspace Center** – with step-by-step tutorials for setting up and securing a home or remote workspace
- Access to **Group Practice Office Hours** weekly direct support and consultation service (live and recorded) [See brochure→](#)
- Access to **questions library** with hundreds of videos of expert-led answers to common questions
- Access to **Step 5 Support Forum** with purchase of Step 5: HIPAA Manual materials [See brochure→](#)

Support

included in
**Group Practice
Care Premium**



Device Security for Practice and Staff HIPAA Security

Everything you need to wrangle both practice-owned and staff-owned devices, get them registered and secured according to HIPAA guidelines, and set a streamlined procedure for managing devices– all without the headaches.

Hands-off functionality

- Simplify clinician onboarding
- Delegate device security through the built-in assignment feature
- Allow clinicians to secure their devices easily, and follow your policies as required.



Assignable and Trackable Process

When you get Group Practice Care Premium, you will receive the ability to assign, track and follow up on device security.

You can even automate this process by linking to the information from your intranet or internal documentation.

In depth, soothing instructional videos

Easy to follow instruction videos that ANYONE can follow. You don't need an IT team to secure your devices!

SAVE that money and follow our soothing instructions for any of your devices.

Leader Orientation Tools

Want the overview of the Device Security BYOD process? We have a full orientation so that leadership can know what to expect and how to prepare staff and team members for this process. It's the TL:DR of BYOD (and if that's too many acronyms for you– it's the too-long-didn't-read of bring-your-own-device) and will help you get up to speed ASAP (because your time and energy are to be protected!)

Support

included in
**Group Practice
Care Premium**



Keep your practice HIPAA-safe even when your team works remotely

Stay secure wherever work is done

A Remote Workspace Leader's Orientation & Document Resource Center – with a policy insert to add to your policy manual, template language for announcing the process to your team, and orientation training for the policy adoption and process

Assignable security training

An assignable HIPAA Security Awareness: Remote Workspaces staff training – included for ALL your team members (at no per-person cost) this training addresses the legal-ethical standards and requirements for remote workspaces in the context of client care and responsibility and how to use the Remote Workspace center to set up a remote workspace to meet those needs

Tools and tutorials

A **Remote Workspace Center** – with step-by-step tutorials for correctly setting up and securing a home WiFi network, installing and configuring a VPN (Virtual Private Network,) and setting up the physical space to best support effective client care delivery for your providers doing teletherapy sessions from their remote workspaces. Plus, a **Remote Workspace Registration Form** so that you've got your documentation that all spaces in which PHI is being handled and client care delivered from are within your practice's "circle." This Remote Workspace Center is included for all team members!



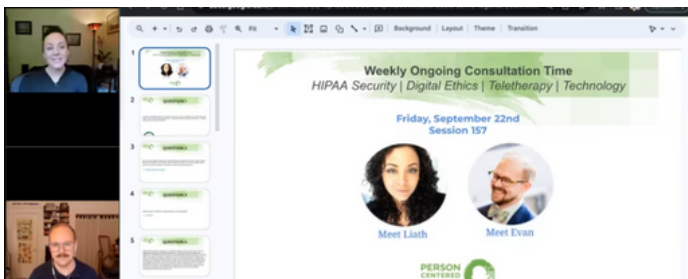
Support

included in
**Group Practice
Care Premium**



Group Practice Office Hours

Direct guidance through ongoing supportive consultations with a team of top experts



Enjoy Personalized Consultations with Industry Experts:

- Liath Dalton
- Evan Dumas

And a rotating team of experts including regular, monthly visits from:

- Eric Ström, JD PhD. LMHC
*Teletherapy and HIPAA Attorney
and Mental Health Pro*

Group Practice Office Hours



Friendly, Affirming, and Expert
Support for Group Practices

What You Need When You Need It

Participate in Group Practice Office Hours at your convenience. If you cannot attend a session live, then we will send you an email with clips from the session. You can then submit follow up questions as needed- it's up to you!

Marketable Certification

Leverage your hard work to set yourself apart!



Show insurance providers, potential clients, and service contract partners that your practice is HIPAA secure and your team is properly trained and equipped to provide teletherapy services.

Complete all the components of our Group Practice Telemental Health Program **and** the formal compliance steps (Step 4 and 5) of the PCT Way and you'll receive our endorsement that your practice is a Telemental Health Certified Practice.



1. Tech Stack



2. Training



3. Device Security



4. Risk Analysis



5. HIPAA Manual

You'll receive all the bragging rights and a snazzy badge!

Investment Information

Materials: Procedure Manual & Practice Forms	\$500
Full training for TMH Director (18.5+ CE Hours)	\$399
Coaching 1 hour of individual consultation for Lights Camera Action	\$250
Consulting & Support Package Group Practice Care Premium	\$99/mo*
Full Program Base:	\$1498 + 99/mo* after *until cancelled

Clinician Training:
per clinician taking the
truncated 5 CE credit
hour training.

\$89

**Not ready for the full
program yet?**

You can get individual
program components a la
carte from [our marketplace](#).

Get in Touch:



www.personcenteredtech.com



info@personcenteredtech.com

